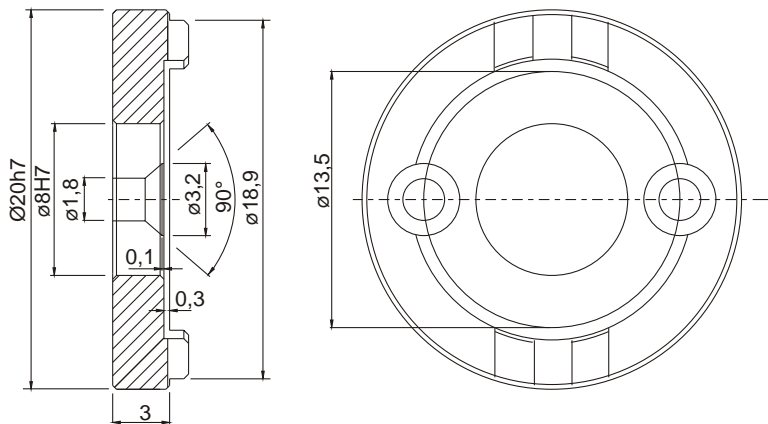


## Part no: 80139504

Snit A-A



**Plate for motor:**

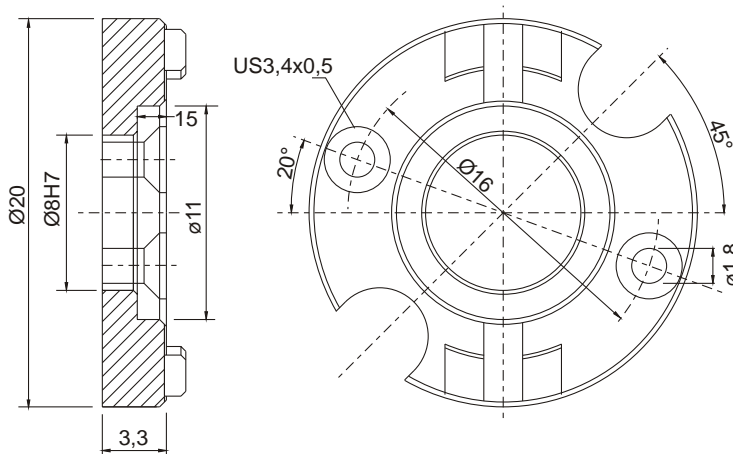
Maxon  
-EC 22 BL Y

**Fits with encoder 2MCH**

With clambushing  
Use spring no. 80149061

## Part no: 80139055

Snit A-A



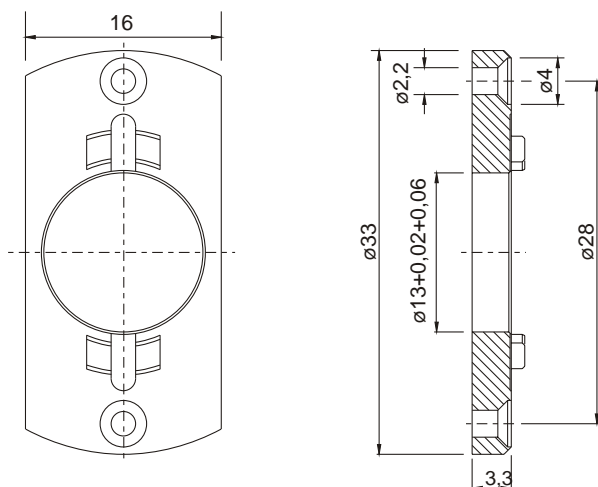
**Plate for motor:**

Maxon  
-Amax 22                      -RE025  
-Amax 26                      -F 2130  
-REmax 24                    -F 2140  
-REmax 21                    -S 2322

**Fits with encoder 2MCH**

With clambushing  
Use spring no. 80149061

## Part no: 80139230



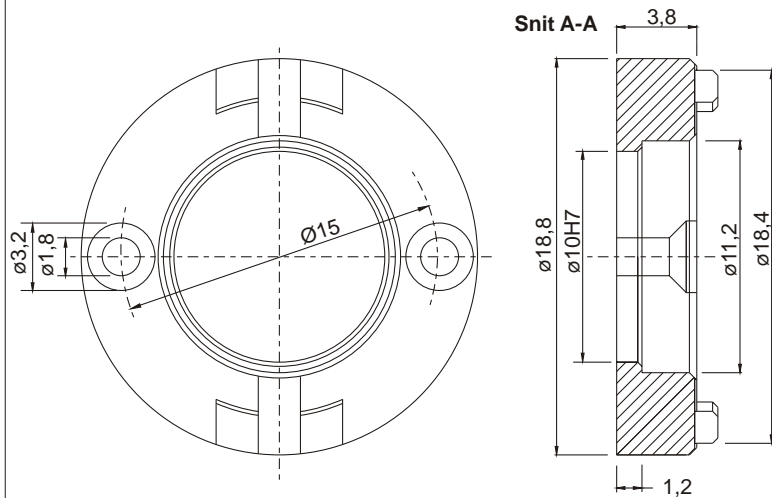
**Plate for motor:**

Maxon  
-RE 35

**Fits with encoder 2MCH**

With clambushing  
Use spring no. 80149061

## Part no: 80139521

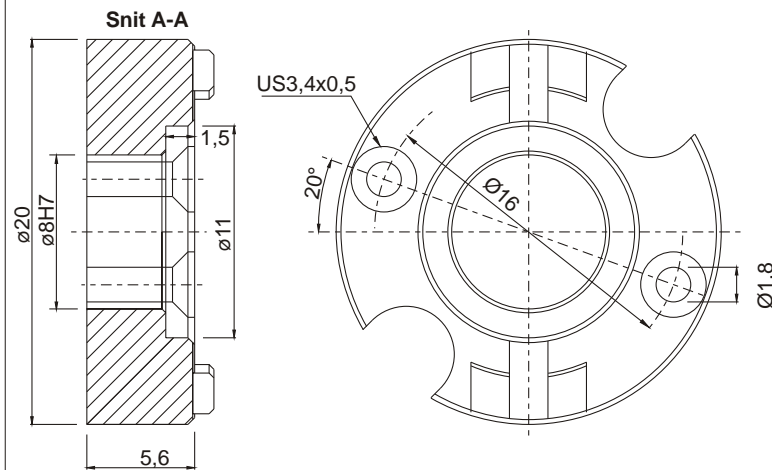


### Plate for motor:

Maxon  
-S 2326

**Fits with encoder 2MCH**  
With clambushing  
Use spring no. 80149061

## Part no: 80139835



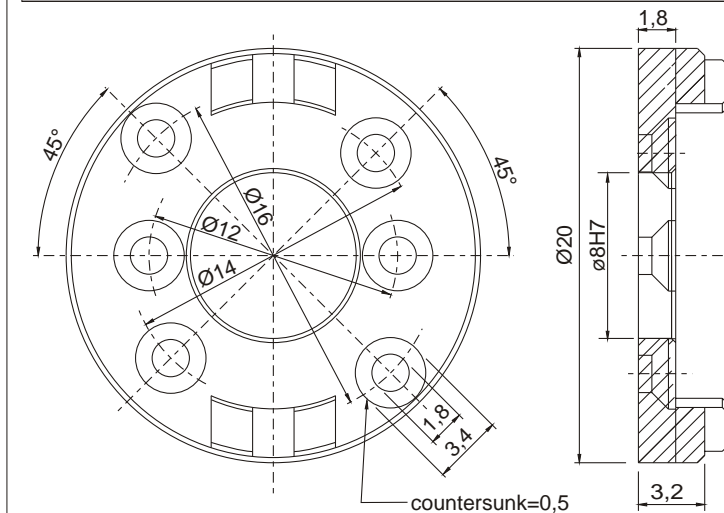
### Plate for motor:

Maxon. Option: Preloaded

-Amax 22	-F 2190
-Amax 26	-S 2322
-Amax 29	-REmax 29
-F 2130	-RE 025

**Fits with encoder 2MCH**  
With clambushing  
Use spring no. 80149061

## Part no: 80139857



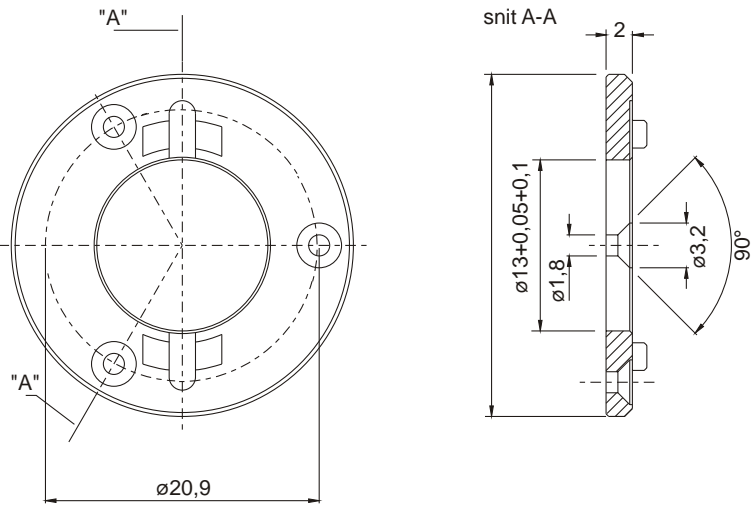
### Plate for motor:

Maxon

-REmax 17	-Amax 16
-REmax 21	-Amax 19
-REmax 24	-Amax 22
-REmax 29	-Amax 26

**Fits with encoder 2MCH-GLUE-ON**  
Only type 2MCH-GLUE-ON  
(No clambushing)  
Use spring no. 80149259

**Part no: 80139287**

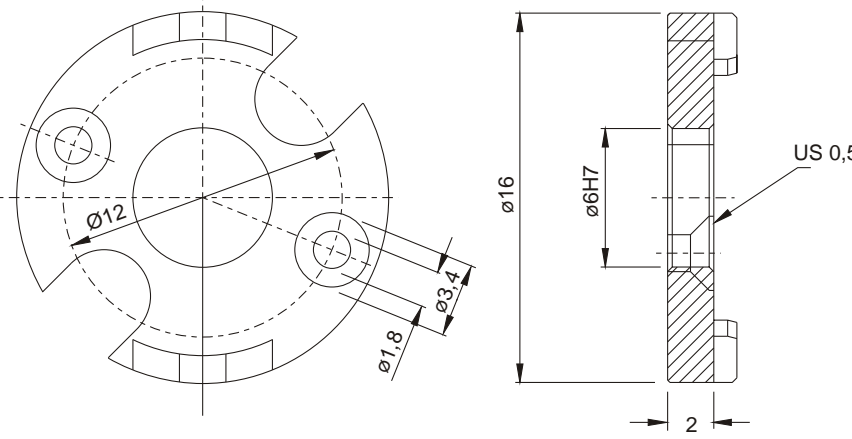


**Plate for motor:**

- Maxon
- EC 32
- Litton SAM

**Fits with encoder 2MCH**  
With clambushing  
Use spring no. 80149061

**Part no.: 80139106**

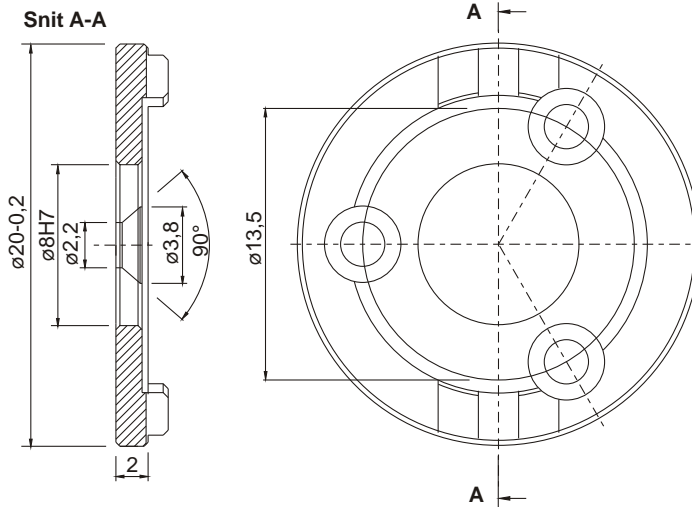


**Plate for motor**

- Maxon
- Amax 16

**Fits with encoder 2MCH**  
With clambushing  
Use spring number 80149061

**Part no: 80139430**

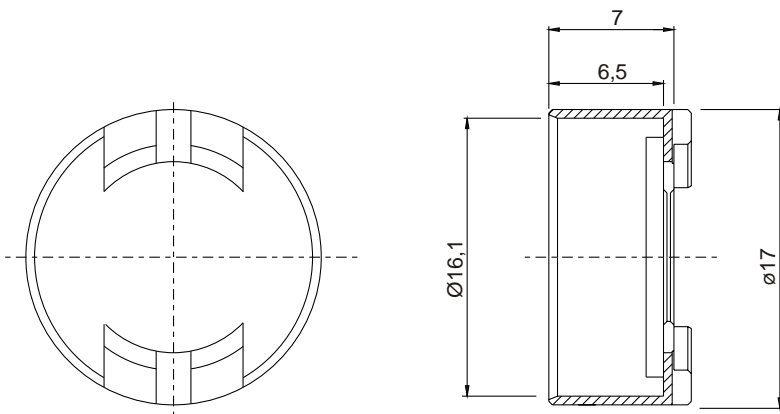


**Plate for motor:**

- Maxon
- EC 20 BL

**Fits with encoder 2MCH**  
With clambushing  
Use spring no. 80149061

## Part no: 80138060



### Plate for motor:

Faulhaber

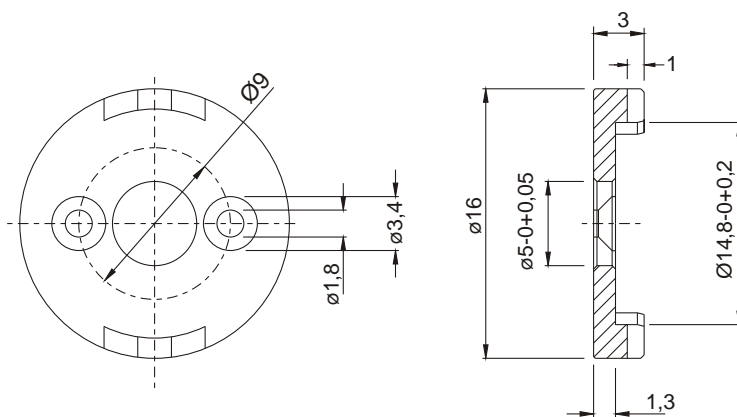
-1624 E Mini SA  
CH - 6980 croglio

### Fits with encoder 2MCH

With clambushing

Use spring no. 80149061  
or spring no. 80148050

## Part no: 80130079



### Plate for motor:

Maxon

- RE 13  
- RE 16

### Fits with encoder 2MCH

With clambushing

Use spring no. 80149061  
or spring no. 80148050

